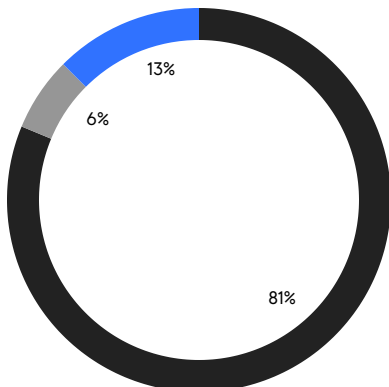
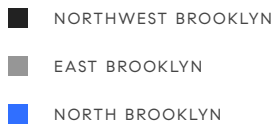


BROOKLYN WEEKLY LUXURY REPORT



545 3RD STREET

RESIDENTIAL CONTRACTS
\$2 MILLION AND UP



16
CONTRACTS SIGNED
THIS WEEK

\$43,279,000
TOTAL CONTRACT VOLUME

The Brooklyn luxury real estate market, defined as all properties priced \$2M and above, saw 16 contracts signed this week, made up of 12 condos, 2 co-ops, and 2 houses. The previous week saw 23 deals. For more information or data, please reach out to a Compass agent.

\$2,704,938

AVERAGE ASKING PRICE

\$2,637,500

MEDIAN ASKING PRICE

\$1,683

AVERAGE PPSF

0%

AVERAGE DISCOUNT

\$43,279,000

TOTAL VOLUME

130

AVERAGE DAYS ON MARKET

Unit 517E at 323 Bergen Street in Boerum Hill entered contract this week, with a last asking price of \$3,425,000. Built in 2024, this condo unit spans 1,790 square feet with 3 beds and 3 baths. It features a large private balcony, an open-concept living and dining space, a kitchen with large island and high-end appliances, a primary bedroom with en-suite bath and large walk-in closet, and much more. The building provides a full-time attended lobby, a private park, a common roof area, and many other amenities.

Also signed this week was Unit 2 at 389 Bergen Street in Park Slope, with a last asking price of \$3,400,000. This condo unit spans 2,028 square feet with 3 beds and 3 baths. It features a private deck and rooftop area, high ceilings, oak wood flooring, an ethanol marble fireplace, custom cabinetry, a chef's kitchen with marble island and high-end appliances, a large primary bedroom with walk-in closet and spa-like bath, and much more.

12

CONDO DEAL(S)

2

CO-OP DEAL(S)

2

TOWNHOUSE DEAL(S)

\$2,667,000

AVERAGE ASKING PRICE

\$2,712,500

AVERAGE ASKING PRICE

\$2,925,000

AVERAGE ASKING PRICE

\$2,575,000

MEDIAN ASKING PRICE

\$2,712,500

MEDIAN ASKING PRICE

\$2,925,000

MEDIAN ASKING PRICE

\$1,823

AVERAGE PPSF

\$942

AVERAGE PPSF

1,515

AVERAGE SQFT

3,143

AVERAGE SQFT



323 BERGEN ST #517E

Boerum Hill

TYPE	CONDO	STATUS	CONTRACT	ASK	\$3,425,000	INITIAL	\$3,425,000
SQFT	1,790	PPSF	\$1,914	BEDS	3	BATHS	2.5
FEES	\$4,454	DOM	N/A				



389 BERGEN ST #2

Park Slope

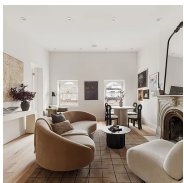
TYPE	CONDO	STATUS	CONTRACT	ASK	\$3,400,000	INITIAL	\$3,500,000
SQFT	2,028	PPSF	\$1,677	BEDS	3	BATHS	2.5
FEES	\$1,019	DOM	45				



637 CARLTON AVE

Prospect Heights

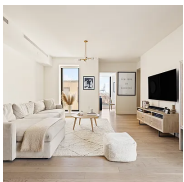
TYPE	TOWNHOUSE	STATUS	CONTRACT	ASK	\$3,250,000	INITIAL	\$3,799,000
SQFT	2,940	PPSF	\$1,106	BEDS	4	BATHS	1
FEES	\$778	DOM	236				



118 REMSEN ST #4

Brooklyn Heights

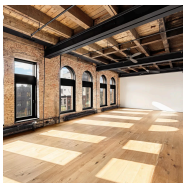
TYPE	CONDO	STATUS	CONTRACT	ASK	\$2,795,000	INITIAL	\$2,795,000
SQFT	1,282	PPSF	\$2,181	BEDS	3	BATHS	2
FEES	\$2,356	DOM	15				



145 PRESIDENT ST #3C

Carroll Gardens

TYPE	CONDO	STATUS	CONTRACT	ASK	\$2,750,000	INITIAL	\$2,750,000
SQFT	1,800	PPSF	\$1,528	BEDS	3	BATHS	2.5
FEES	\$3,319	DOM	29				



423 ATLANTIC AVE #3NP

Boerum Hill

TYPE	COOP	STATUS	CONTRACT	ASK	\$2,750,000	INITIAL	\$2,750,000
SQFT	1,854	PPSF	\$1,484	BEDS	2	BATHS	2
FEES	N/A	DOM	22				

Compass is a licensed real estate broker and abides by Equal Housing Opportunity laws. All material presented herein is intended for informational purposes only. Information is compiled from sources deemed reliable but is subject to errors, omissions, changes in price, condition, sale, or withdrawal without notice. No statement is made as to the accuracy of any description. All measurements and square footages are approximate. This is not intended to solicit property already listed. Nothing herein shall be construed as legal, accounting or other professional advice outside the realm of real estate brokerage.



118 REMSEN ST #3

Brooklyn Heights

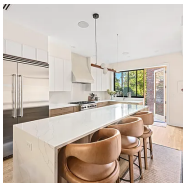
TYPE	CONDO	STATUS	CONTRACT	ASK	\$2,750,000	INITIAL	\$2,750,000
SQFT	1,216	PPSF	\$2,262	BEDS	3	BATHS	2
FEES	\$1,953	DOM	96				



22 PIERREPONT ST #3

Brooklyn Heights

TYPE	COOP	STATUS	CONTRACT	ASK	\$2,675,000	INITIAL	\$2,825,000
SQFT	N/A	PPSF	N/A	BEDS	3	BATHS	2
FEES	\$2,171	DOM	106				



631 MACON ST

Bedford Stuyvesant

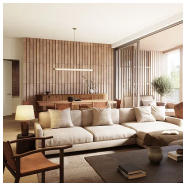
TYPE	TOWNHOUSE	STATUS	CONTRACT	ASK	\$2,600,000	INITIAL	\$2,600,000
SQFT	3,345	PPSF	\$778	BEDS	6	BATHS	3.5
FEES	\$688	DOM	130				



323 BERGEN ST #419E

Boerum Hill

TYPE	CONDO	STATUS	CONTRACT	ASK	\$2,575,000	INITIAL	\$2,450,000
SQFT	1,332	PPSF	\$1,934	BEDS	2	BATHS	2
FEES	\$3,277	DOM	248				



323 BERGEN ST #319E

Boerum Hill

TYPE	CONDO	STATUS	CONTRACT	ASK	\$2,575,000	INITIAL	\$2,375,000
SQFT	1,332	PPSF	\$1,934	BEDS	2	BATHS	2
FEES	\$3,277	DOM	294				



29 HURON ST #10FW

Greenpoint

TYPE	CONDO	STATUS	CONTRACT	ASK	\$2,475,000	INITIAL	\$2,475,000
SQFT	1,402	PPSF	\$1,766	BEDS	3	BATHS	2
FEES	\$2,630	DOM	N/A				

Compass is a licensed real estate broker and abides by Equal Housing Opportunity laws. All material presented herein is intended for informational purposes only. Information is compiled from sources deemed reliable but is subject to errors, omissions, changes in price, condition, sale, or withdrawal without notice. No statement is made as to the accuracy of any description. All measurements and square footages are approximate. This is not intended to solicit property already listed. Nothing herein shall be construed as legal, accounting or other professional advice outside the realm of real estate brokerage.



345 BERGEN ST #GARDEN

Boerum Hill

TYPE	CONDO	STATUS	CONTRACT	ASK	\$2,395,000	INITIAL	\$2,395,000
SQFT	2,339	PPSF	\$1,024	BEDS	2	BATHS	2
FEES	\$2,607	DOM	N/A				



323 BERGEN ST #306W

Boerum Hill

TYPE	CONDO	STATUS	CONTRACT	ASK	\$2,350,000	INITIAL	\$2,175,000
SQFT	1,221	PPSF	\$1,925	BEDS	2	BATHS	2
FEES	\$3,011	DOM	294				



1 CITY POINT #38L

Downtown Brooklyn

TYPE	CONDOP	STATUS	CONTRACT	ASK	\$2,319,000	INITIAL	\$2,319,000
SQFT	1,167	PPSF	\$1,988	BEDS	2	BATHS	2
FEES	N/A	DOM	N/A				



183 JAVA ST #4A

Greenpoint

TYPE	CONDO	STATUS	CONTRACT	ASK	\$2,195,000	INITIAL	\$2,195,000
SQFT	1,268	PPSF	\$1,732	BEDS	3	BATHS	2
FEES	\$708	DOM	35				

Compass is a licensed real estate broker and abides by Equal Housing Opportunity laws. All material presented herein is intended for informational purposes only. Information is compiled from sources deemed reliable but is subject to errors, omissions, changes in price, condition, sale, or withdrawal without notice. No statement is made as to the accuracy of any description. All measurements and square footages are approximate. This is not intended to solicit property already listed. Nothing herein shall be construed as legal, accounting or other professional advice outside the realm of real estate brokerage.